

# KLET

Parkiranje v kleti

INVESTITOR:

**IMO-REAL** d.o.o.  
Ulica Štefana Kovača 10, Murska Sobota

BLOK A.	
STAN.	ST.PM
A.P.1	na terenu
A.P.2	55
A.P.3	56
A.P.4	52
A.N1.1	42
A.N1.2	41
A.N1.3	40
A.N1.4	39
A.N2.1	38
A.N2.2	37
A.N2.3	36
A.N2.4	34
A.N3.1	27
A.N3.2	28
A.N3.3	29
A.N3.4	30
A.N4.1	32
A.N4.2	33
A.N4.3	54

BLOK B.	
STAN.	ST.PM
B.P.1	18
B.P.2	53
B.P.3	22
B.P.4	19
B.N1.1	20
B.N1.2	21
B.N1.3	23
B.N1.4	24
B.N2.1	25
B.N2.2	26
B.N2.3	44
B.N2.4	43
B.N3.1	51
B.N3.2	50
B.N3.3	49
B.N3.4	48
B.N4.1	47
B.N4.2	46
B.N4.3	45

BLOK C.	
STAN.	ST.PM
C.P.1	1
C.P.2	35
C.P.3	31
C.P.4	2
C.N1.1	3
C.N1.2	4
C.N1.3	5
C.N1.4	6
C.N2.1	7
C.N2.2	8
C.N2.3	9
C.N2.4	10
C.N3.1	11
C.N3.2	12
C.N3.3	13
C.N3.4	14
C.N4.1	15
C.N4.2	16
C.N4.3	17



SITUACIJA KLETI 1:500

PROJEKTANT:

STUDIOKALAMAR d.o.o.  
<http://www.kalamar-architects.com>

# KLET objekt A

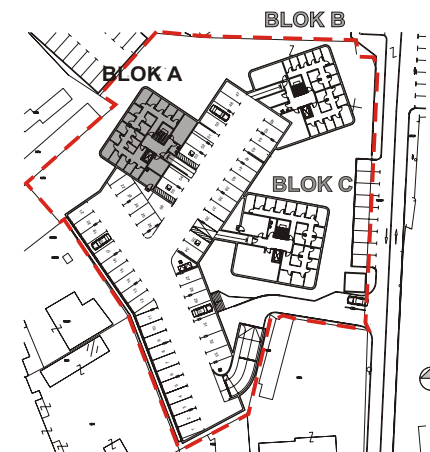
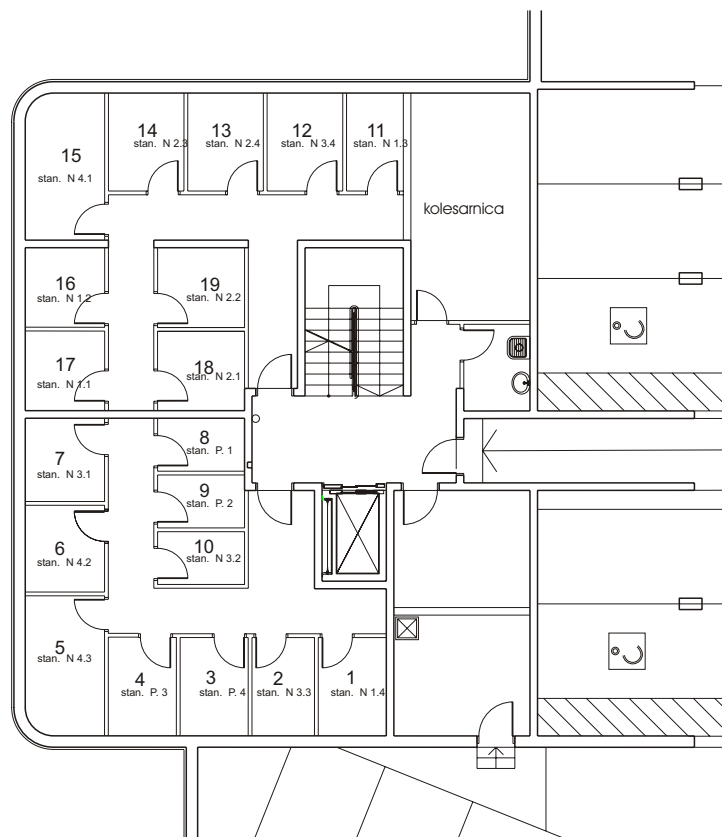
Shrambe v objektu A

INVESTITOR:

**IMO-REAL** d.o.o.

Ulica Štefana Kovača 10, Murska Sobota

STAN.	SHRAMBA	m2	m2x0,75
A.P.1	8	3,21	2,41
A.P.2	9	3,22	2,42
A.P.3	4	4,68	3,51
A.P.4	3	4,68	3,51
A.N1.1	17	4,42	3,32
A.N1.2	16	4,61	3,46
A.N1.3	11	3,90	2,93
A.N1.4	1	4,69	3,52
A.N2.1	18	4,85	3,64
A.N2.2	19	4,85	3,64
A.N2.3	14	5,15	3,86
A.N2.4	13	5,18	3,89
A.N3.1	7	4,61	3,46
A.N3.2	10	3,21	2,41
A.N3.3	2	4,29	3,22
A.N3.4	12	5,18	3,89
A.N4.1	15	8,05	6,04
A.N4.2	6	4,82	3,62
A.N4.3	5	7,64	7,64



m 1:200



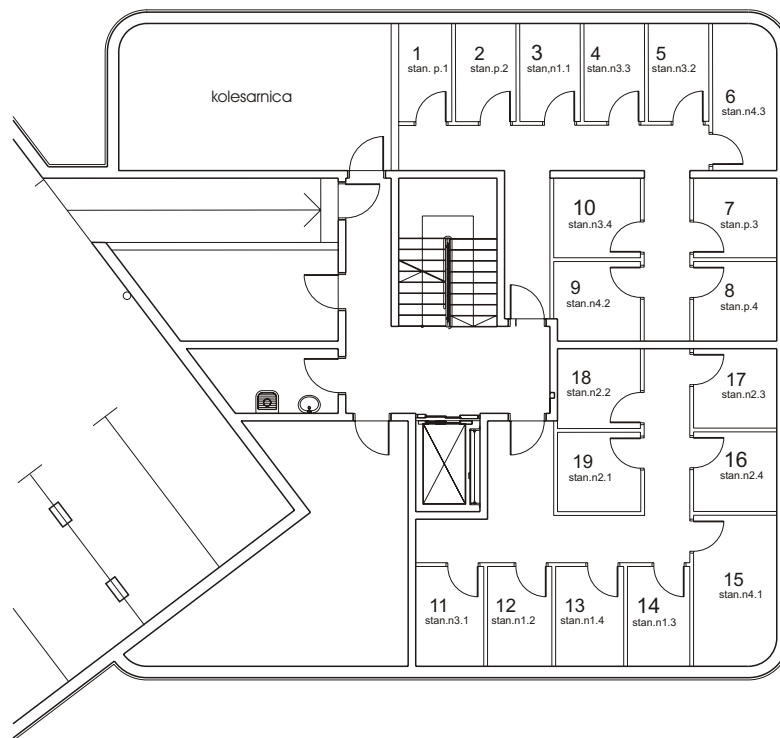
PROJEKTANT:

STUDIOKALAMAR d.o.o.  
<http://www.kalamar-architects.com>

# KLET objekt B

Shrambe v objektu B

STAN.	SHRAMBA	m2	m2x0,75
B.P.1	1	3,65	2,74
B.P.2	2	4,16	3,12
B.P.3	7	4,63	3,47
B.P.4	8	4,63	3,47
B.N1.1	3	4,15	3,11
B.N1.2	12	4,49	3,37
B.N1.3	14	4,34	3,26
B.N1.4	13	4,75	3,56
B.N2.1	19	4,60	3,45
B.N2.2	18	4,63	3,47
B.N2.3	17	4,63	3,47
B.N2.4	16	4,63	3,47
B.N3.1	11	4,75	3,56
B.N3.2	5	4,14	3,11
B.N3.3	4	4,15	2,42
B.N3.4	10	4,82	3,62
B.N4.1	15	8,66	6,50
B.N4.2	9	4,77	3,58
B.N4.3	6	6,48	4,86



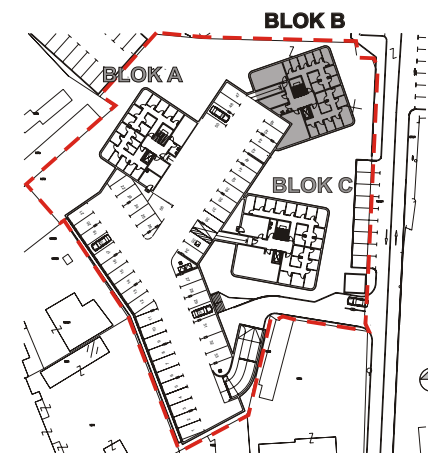
m 1:200



INVESTITOR:

**IMO-REAL** d.o.o.

Ulica Štefana Kovača 10, Murska Sobota



SITUACIJA 1:2000

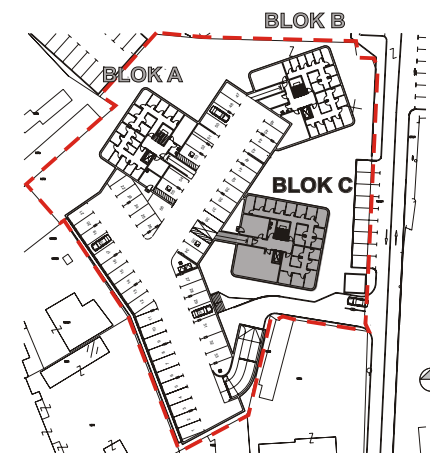
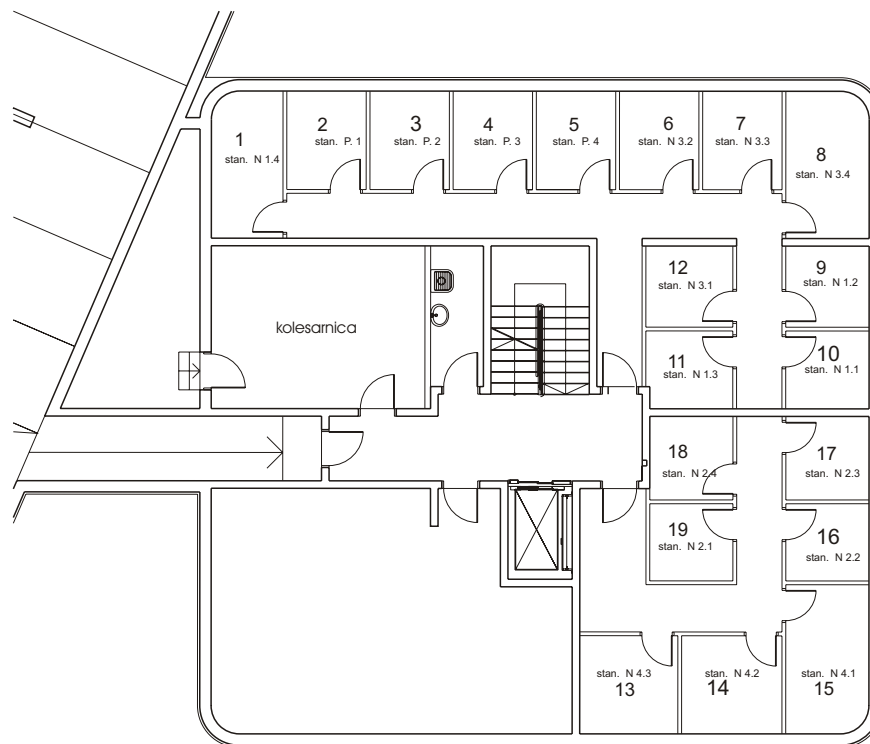
PROJEKTANT:

**STUDIOKALAMAR** d.o.o.  
<http://www.kalamar-architects.com>

# KLET objekt c

Shrambe v objektu c

STAN.	SHRAMBA	m2	m2x0,75
C.P.1	2	5,46	4,10
C.P.2	3	5,46	4,10
C.P.3	4	5,46	4,10
C.P.4	5	5,46	4,10
C.N1.1	10	4,55	3,41
C.N1.2	9	4,73	3,55
C.N1.3	11	4,64	3,48
C.N1.4	1	7,25	5,44
C.N2.1	19	4,49	3,37
C.N2.2	16	4,49	3,37
C.N2.3	17	4,84	3,63
C.N2.4	18	4,85	3,64
C.N3.1	12	4,93	3,70
C.N3.2	6	5,45	4,09
C.N3.3	7	5,46	4,10
C.N3.4	8	8,47	6,35
C.N4.1	15	8,57	6,43
C.N4.2	14	6,89	5,17
C.N4.3	13	6,75	5,06



m 1:200

